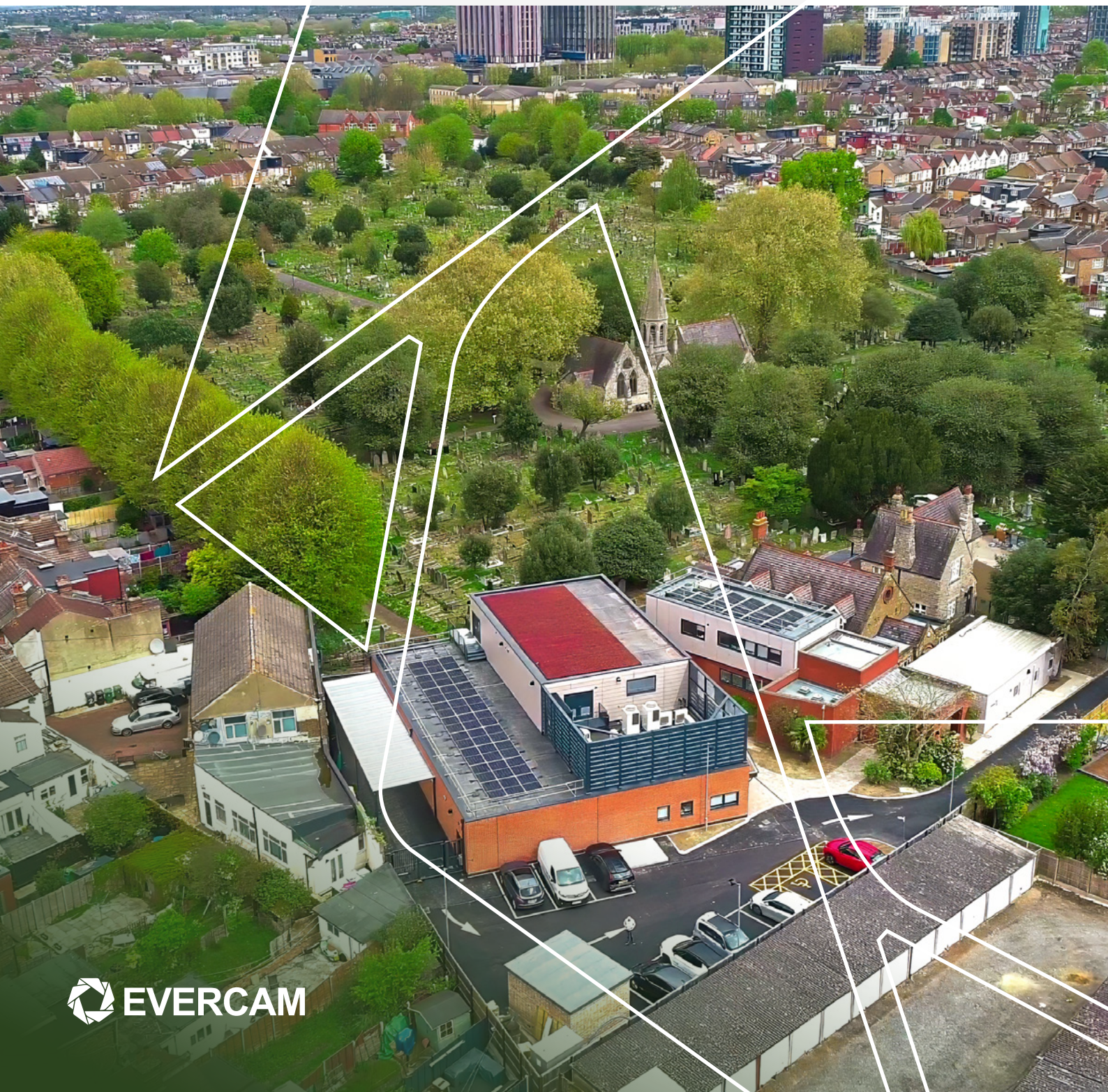


CaseStudy

The impact of Live Site Visibility on
East London Forensic Centre Construction





Waltham Forest Council is investing to provide a modern purpose-built Mortuary

Challenged by the limitations of outdated facilities, and health and structural concerns, Waltham Forest Council initiated the construction of a modern, purpose-built mortuary equipped with a PMCT scanner. This facility is designed to provide unique services in Greater London, distinguishing it as the only purpose-built mortuary south of the Midlands that meets modern standards.

Client	Waltham Forest Council
Project	East London Forensic Centre
Category	Public Utilities
Location	Waltham Forest, Greater London



Main Improvements

- Increased capacity and improved facilities.
- Advanced PMCT scanner for efficient physical and digital autopsies.
- Enhanced public areas and separate entrances for staff and visitors.
- Improved parking, including disabled spaces and cycle storage
- Soft and hard landscaping to enhance the environment.

Objectives and Challenges

The project aimed to replace inadequate structures on a small site, compounded by historical antisocial behaviour and the involvement of multiple stakeholders. To effectively manage these challenges, the Council implemented the [Evercam platform](#) to enhance construction operations, ensure full site visibility, and simplify progress reporting.



Modern Site Monitoring and Reporting with Evercam

Prior to the camera installation, site visits (a 100-mile trip) were conducted weekly by the clerk of works and twice a month by the council's senior project manager. With the implementation of Evercam, stakeholders now benefit from remote live site visibility and automatic daily [progress photos](#) shared via SnapMails, enabling informed and faster decision making unconstrained by physical site visits.

"The real-time monitoring capability of the camera system was particularly beneficial for team members who previously had to travel long distances, such as those coming from Essex or London, who otherwise would have faced significant travel times. The use of the camera reduced the frequency of their visits, saving time and resources, while still keeping them well-informed about the project's progress."

— Ashana Jones, Council Senior Project Manager

Improved Efficiency and Stakeholder Communication

Previously, the project manager spent significant time preparing detailed reports and visual aids for monthly updates. The installation of the site camera and Evercam platform's ability to create custom [time-lapse videos](#) significantly streamlined this process, reducing both preparation time and effort for stakeholder presentation.

"The timelapse videos significantly streamlined my work. Instead of laboriously creating bullet points for the presentation, I could simply discuss the content while referencing the videos."

— Council Senior Project Manager

This efficiency not only saved her three hours of work preparing each presentation, but also improved the effectiveness and impact of the meetings with stakeholders.

Real-time Visuals for Faster Decision Making

During the construction of the mortuary, the project team encountered a minor delay that was critical for completing groundwork and drainage before delivering the modular units. Thanks to the real-time monitoring capabilities of the Evercam platform, the project team could track the progress of the drainage works and make necessary schedule adjustments in advance.

"The drainage posed a concern for us due to a slight delay. However, we were able to monitor the situation before the delivery of the modular units, gaining insight into the current status and identifying where adjustments were needed within the next 10 days"

— Ashana Jones

The ability to anticipate and adjust logistics and schedules based on real-time visual data helped keep the project on track and manage site logistics efficiently, preventing additional delays and optimising resource use.



Ensuring Site Integrity with Reliable 24/7 Recordings

The Evercam system's ability to record high-quality footage [around the clock](#) proved essential for security. It captured critical footage during a vandalism incident, aiding subsequent investigations. Despite a power tampering incident, the cameras maintained continuous operation, ensuring there was no loss of footage and providing uninterrupted monitoring.

"We encountered an issue with the power supply, but surprisingly, the camera continued recording despite our initial concerns. Initially, I feared that someone had tampered with the power source, potentially causing a loss of two days' worth of footage. However, to our relief, we were able to retrieve some of that crucial information, which turned out to be great news."

— Council Senior Project Manager



Return on Investment

The implementation of the Evercam system decreased the need for frequent site visits, saving both travel costs and time. Its capability to continue recording during power interruptions enhanced site security and aided law enforcement and insurance efforts, resulting in the recovery of stolen goods. Additionally, the system introduced efficiencies that saved the project team three hours per presentation, enhancing the quality and impact of stakeholder meetings. Overall, the estimated ROI from these improvements is £70,000.

The East London Forensic Centre project exemplifies how advanced technology like Evercam platform can transform project management in the construction industry, enhancing efficiency, security, and stakeholder communication.

Visit [our website](#) to learn more about our comprehensive range of solutions tailored for the construction industry and how they can transform your construction management operations.



Whether you want to tell us about your project or find out more about our company, get in touch today and a member of our team will get back to you shortly.

evercam.com

 **evercam**

 **evercam_**

 **evrcm**



Ireland

6-7 Granby Row, Dublin 1,
D01 FW20, Ireland.
+353 1919 4500

UK

344-354 Grays Inn Rd,
London WC1X 8BP
+44 800 047 2900

U.S.A

9639 Hillcroft St #2022
Houston, TX 77096
+1 979 315 1010

Singapore

10 Anson Rd,
#22-02 International Plaza
Singapore 079903
+65 9699 0677

Australia

G 651 Doncaster Rd.
Doncaster Vic 3108
+61 390 212 855